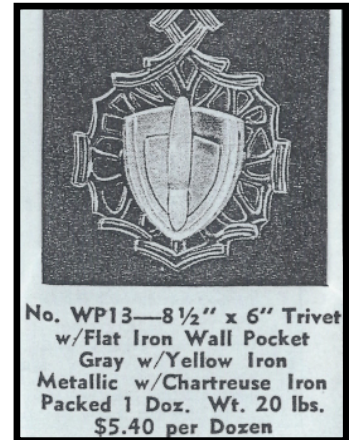


# IRON WALL POCKET

**By Craig Nissen**



Another 1953 released wall pocket was the Iron wall pocket. The catalog number is "WP13". The wall pocket has the same outer dimensions as the Lovebirds and Owls wall pocket as the trivet portion is the same piece of pottery on all; under 8-1/2 inches in length and 6 inches wide.



The production glaze colors are described, as you can see in the catalog image, as a gray trivet with yellow iron and a metallic trivet with chartreuse iron. The first of those is pictured to the left. In reality, McCoy Pottery produced the Iron wall pocket in five glaze color combinations and all are pictured in this article. Even more of a surprise, the metallic trivet

with chartreuse iron has never surfaced to date. It would seem extremely likely that they meant to say chartreuse trivet with metallic iron; pictured on opposite page. So, in addition to those two already identified that they exist, there is metallic trivet with yellow iron, Yellow trivet with gray iron and metallic trivet with gray iron. None are truly rare but certainly some are more easily found than others. The metallic trivet with gray iron is definitely the most common. Above left gray trivet with yellow iron. Value: \$25-40

Just like the lovebirds and the owls, the Iron is a separate piece of pottery. It has the same back configuration that includes the shape to line up with the center of the trivet.



To the left is the back of the Owls wall pocket showing the "McCoy" mark and the USA designation, the same as the production Lovebirds.

In this example you can see that the three resting ribs are almost completely covered with glaze. As with the Lovebirds and the Owls wall pocket, examples will surface with those three resting areas unglazed but this is by far the most common.

Right; the production combination of chartreuse trivet with a metallic iron. Value: \$ 30-45

Below are the other three known color combinations of the Iron wall pocket.

First, we have the combination of metallic trivet with a yellow iron. Not rare but difficult to find. Value: \$50-60

Next, a rare combination of yellow trivet with a gray iron. The yellow trivet was exclusively used for the Owls wall pocket. Value: \$ 50-60

Far right is the most common combination of metallic trivet with a gray iron. Value: \$20-35



The Iron wall pockets were usually produced with a little cold paint decoration as shown in this photo. In this case on a gray Iron, the three dots on the side shown in photo have red cold paint. The handle of the Iron has accents up and bottom in a dark cold paint color. Good condition of the cold paint can add \$10-20 to the value.





Note the difference in these “same” trivet backs to the right. The left is metallic, with a bronze type finish whereas the right is black and shows a little more detail in the trivet hanger area. From a production standpoint these are both “metallic trivets with gray irons”.

Below; note the differences in the same examples. The left metallic trivet has a warm gray tone while the right black trivet has a colder gray tone to the iron. Both wall pockets have roughly the same value.



This last photo example is an “Oops” piece. Even with the line up assistance in both pieces, the iron manages to be off of the right location. A fun piece for sure!  
Value \$ 40-50

